

— Starting software —

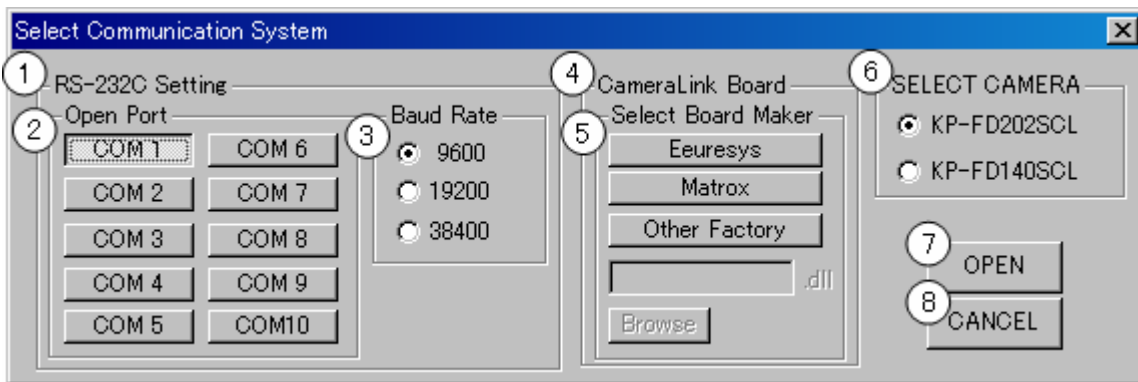


Software's icon

Please double click "KP-FD202_140P(S)CL.exe" on screen.

Then communication select dialog-box appear at the center on screen.

— The communication setup —



[Each part explanation]

①RS-232C Setting

Setup of communication by RS-232C connection.

②Open Port

Select COM port use for communication.

③Baud Rate

Select the present baud rate of camera. KP-FD202PCL/SCL and KP-FD140PCL/SCL are 9600. This item is effective when RS-232C connecting.

④CameraLink Board

Setup communication by CameraLink connection using DLL file proved board manufacture.

⑤Select Board Maker

Select the manufacture of board linked to the camera now. When use the board of the manufacture except "Euresys" or "Matrox", select "Other" then input DLL name or browse DLL file at "Browse" button.

⑥Select CAMERA

Select camera type.

Select "KP-FD202SCL" for KP-FD202PCL or KP-FD202SCL.

Select "KP-FD140SCL" for KP-FD140PCL or KP-FD140SCL.

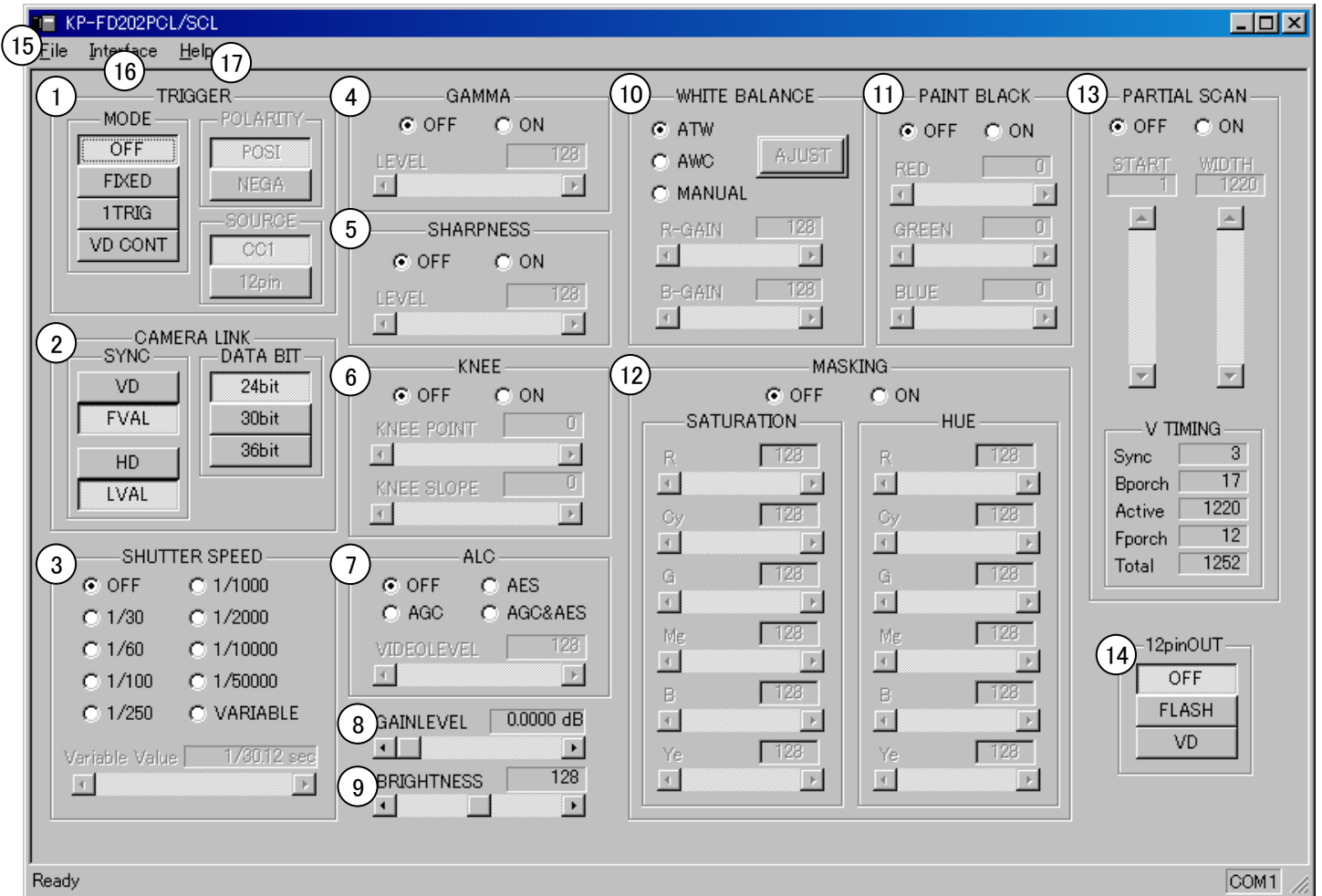
⑦OPEN

Communication is start according to selected setups.

⑧CANCEL

Software is ended without starting connection.

—Control—



[Each part explanation]

① TRIGGER

Set external trigger operation available

- MODE : Change of mode.
 - OFF : It is not used external trigger.
 - FIXED : It is Fixed shutter mode.
 - 1TRIG : It is One trigger mode.
 - VD CONT : It is VD reset mode.
- SOURCE : Setting of trigger source.
 - CC1 : Trigger signal is inputted from CameraLink cable.
 - 12pin : Trigger signal is inputted from NO.7 pin of DCIN 12pin connector.
- POLARITY : Select positive of negative trigger pulse polarity.

②CAMERA LINK

Setting about CameraLink

- DATA : Setting of output data bit depth.
- SYNC : Setting of horizontal / vertical sync system.

③SHUTTE SPEEDRS

Electronic shutter speed adjustment.

- OFF : It is normal shutter.
- 1/30 to 1/50000 : It is preset shutter.
- VARIABLE : It is variable shutter. Shutter speed can be set in the range of 1/30 to 1/100000 second.

④GAMMA

Setting of gamma correction.

- ON/OFF : ON / OFF of gamma correction.
- LEVEL : Gamma curve is set in the range of 0 to 255.

⑤SHARPNESS

Setting of sharpness (object contour correction).

- ON/OFF : ON / OFF of sharpness.
- LEVEL : Sharpness level is set in the range of 0 to 255.

⑥KNEE

Setting of knee.

- ON/OFF : ON / OFF of sharpness.
- KNEE POINT : Knee point is set in the range of 0 to 32.
- KNEE SLOPE :

⑦ALC

Setting of Auto Level Control.

- OFF : AGC/AES is set to OFF.
- AGC : AGC is set to ON and AES is set to OFF. Gain is automatically adjusted
- AES : AES is set to ON and AGC is set to OFF. Shutter speed is automatically adjusted.
- AGC & AES : AGC and AES are set to ON.
- VIDEO LEVEL : Video level adjusted automatically in the range of 0 to 255 when AGC and AES are set to ON.

⑧GAINLEVEL

Electric sensitivity adjustment in the range of 0 to +18 dB.

⑨BRIGHTNESS

Offset level adjustment in the range of 0 to 255.

⑩WHITE BALANCE

Setting of white balance.

- MODE : Change of mode.
 - ATW : White balance can be adjusted at real time.
 - AWC : White balance is set to value auto-adjusted by "ADJUST".
 - ADJUST — It can adjust white balance automatically.
 - MANUAL : White balance is adjusted manually by adjustment "R-GAIN" and "B-GAIN".
 - R-GAIN — R-Gain is adjusted in the range of 0 to 255.
 - B-GAIN — B-Gain is adjusted in the range of 0 to 255.

⑪PAINT BLACK

Setting of color level of R, G and B.

- ON/OFF : ON/ OFF of paint black.
- RED : RED color level adjustment in the range of 0 to 255.
- GREEN : GREEN color level adjustment in the range of 0 to 255.
- BLUE : BLUE color level adjustment in the range of 0 to 255.

⑫MASKING

Setting of 6 color independent masking.

- ON/OFF : On / OFF of 6 color independent masking.
- SATURATION : Saturation of R, G, B, Cy, Mg, and Ye are independently adjusted in the range of 0 to 255.
- HUE : Hue of R, G, B, Cy, Mg, and Ye are independently in the range of 0 to 255.

⑬PARTIAL SCAN

Setting of partial scan. The timing change according as START or WIDTH.

- ON/OFF : ON / OFF of partial scan.
- START : Scan start position can be set in 1H steps.
- WIDTH : Scan width can be set in 1H steps.

⑭12pin OUT

Selection of output signal from No.10 pin of DCIN 12pin connector. It is not used when trigger source is except 12pin.

- OFF : Nothing is outputted.
- FLASH : Flash pulse (strobe) is outputted.
- VD : Camera VD. is outputted

⑮File

- Open : Read a file which saved ① to ⑭ (extension “.kp”). And reflect contents of the file.
- Save : ① to ⑭ are saved.
- Save As : ① to ⑭ are saved to a file.
- Exit : Software is ended.

⑯Interface

Use when camera is reconnected to PC under software starting.

- Read From Camera : Information from ① to ⑭ are read from camera.
- Write To Camera : Information from ① to ⑭ are write to camera.

⑰Help

Show software version.